

Innovative Building Envelope News from VaproShield

VaproShield Ribbit Review



Building Envelope Solutions for Prefab/Modular Construction

November 2014

Inclement Weather Ahead - Avoid Construction Delays with VaproShield's Advanced Adhesive Technology



Manganaro MidAtlantic is confident over 100,000 sq.ft (20 stories) of WrapShield SA Self-Adhered sheet

membrane installed on Mid-Pike Block 10 in the upcoming winter months. They worked with WrapShield SA Self-Adhered on two other major projects: Washington Gateway and Eleven55 Ripley.

Read about how a failing fluid-applied air barrier on Eleven55 Ripley was replaced by WrapShield SA Self-Adhered in the March 2014 issue of Durability and Design, "Breaking the Weather Barrier."

VaproShield: Chosen for Modular Post-Disaster Housing Units

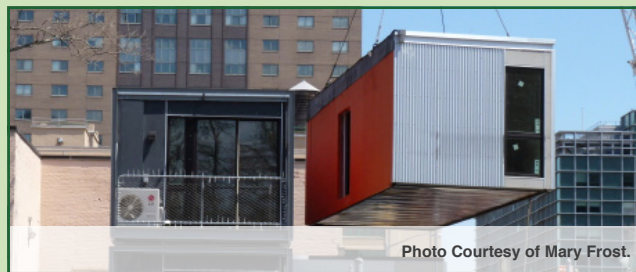


Photo Courtesy of Mary Frost.

WrapShield SA® Self-Adhered Water Resistant Vapor Permeable Air Barrier Sheet Membrane was used on the experimental, post-disaster housing prototype located in Brooklyn, NY. WrapShield SA Self-Adhered, used as part of a

rain screen design, will help to prevent mold, mildew and rot from forming in the walls. The membrane doubles as an air barrier helping to regulate air flow, keeping units cool in the summer and warm in the winter, thus reducing energy costs. The project was featured in the October 2014 issue of Greensource's SNAP Magazine.

VaproShield Participates in First Prefab Micro Housing Project

It took only six months to complete 38 Harriet Apartments in San Francisco. WrapShield® was installed behind James Hardie® Commercial Board Siding and RevealShield® was installed as part of the open joint rain screen system. Both products contributed to the rapid installation. The project was featured in the fall edition of Woodworks "Putting the Pieces Together" case study.



Photo Courtesy of woodworks.org

SilverBirch Hotels & Resorts Home2 Suites



Located in Edmonton, Alberta, WrapShield SA Self-Adhered was installed during the long, cold winter months.

Stacking Up



Photo Courtesy of Gluck+

Over 32,000 sq.ft. of WrapShield SA Self-Adhered was used on the 56 steel and concrete modules built by DeLuxe Building Systems, the modular fabricator. The project used VaproLiqui-Flash™, a liquid applied breathable waterproof flashing material around the multiple rough openings. "The Stack" was featured in numerous trade journals and in the video "Introduction to off-site construction methods" by Gluck+.

Innovative Building Envelope News from VaproShield

VaproShield Ribbit Review



Building Envelope Solutions for Prefab/Modular Construction

November 2014

Hospitality Industry Surging Ahead: Hyatt Place Chicago-South



Recently receiving numerous accolades, the new Hyatt Place used WrapShield SA Self-Adhered behind a unique blade-shaped design. The

project received LEED Gold certification, making it the highest LEED-rated project in Illinois.

Accolades:

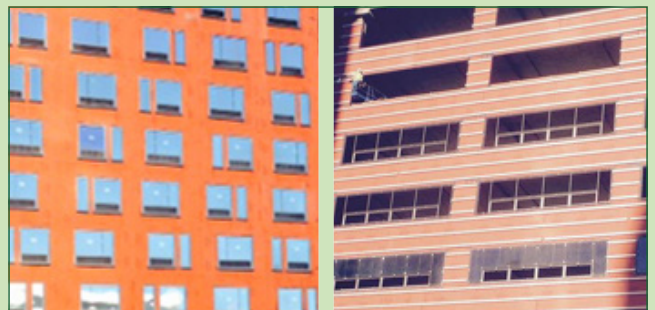
- 2013 CISCO Project of the Year
- 2014 Building Design + Construction Magazine Building Team Award
- Lake County Contractors Association Honorable Mention
- Ranked by TripAdvisor[®] as one of Chicago's greenest hotels

Who is VaproShield?

For over a decade VaproShield has designed and manufactured weather resistive vapor permeable (WRB), air barrier (AB) membranes and accessories, creating a total solution-based approach to protecting the building envelope.

Hill 7 - Field and Off Site Prefab

Hill 7, located in downtown Seattle is using two types of installation methods. Field installation of WrapShield SA Self-Adhered (orange, left) and prefabricated composite modular panels (right). The modular panels used WrapShield SA Self-Adhered as part of their



factory fabrication. View the construction cam to experience real-time progress at <http://www.earthcam.net/projects/mortenson/hill7/>

Ribbit Resource

Pitfalls of Tape Applied After the WRB is Installed

Recently, the Quality Built Tech Alert newsletter clearly outlined issues with installing tape after WRB installation.

The article warns of:

- Horizontal taped seams create reverse lap, allowing moisture intrusion.
- Tape installed in dirty or wrinkled membranes does not adhere.
- Tape installed carelessly over fasteners prevents a full seal.

Consider how your WRB is installed and sealed. VaproShield membrane systems solve these issues noted in the article. We engineered out the need for external tapes. The factory installed horizontal tape automatically creates the shingle effect, making reverse lap impossible; and the horizontal joint seal is backed-up by the 20 year material warranty.