

PanelShield™ SA

a vapor permeable Air Barrier (AB) Water Resistive Barrer (WRB) sheet membrane for panelization /modular and commercial construction:

Product No.: 17309090

RevealFlashing SA™

Product No.: 44305500

Overview

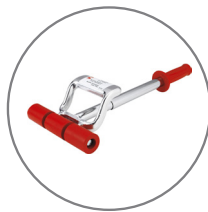
PanelShield SA is a permeable polyester air barrier WRB membrane designed for use in panelization/modular and commercial construction. It is designed for use behind closed-joint rainscreen cladding assemblies.

Installation Best Practices

Important Note:

VaproShield recognizes there are many acceptable ways to install an air and water resistive barrier based on installer experience. Best practices require continuity in the installed assembly for both air and water resistance. This includes correct sequencing for shingle fashion method of installation. The following factory/field installation sequence demonstrates best practices to establish a successful continuous air and water resistive barrier installation. Any deviations from the best practice sequence must be approved by the architect or building envelope consultant of record, prior to installation. VaproShield highly recommends all cladding systems use rainscreen design practices.

- Always install in a “**weatherboard or shingle fashion**” with the upper courses lapped over the lower courses.
- PanelShield SA can be installed in a vertical or horizontal direction.
- Membrane is easily cut to size with basic hand tools.
- All **penetrations including windows and doors** must be installed in proper sequence to ensure a “weatherboard or shingle fashion” end result.
- **Roll membrane with two-handed roller to ensure proper adhesion to substrate**
- If desired adhesion is not attained between membranes due to site conditions, VaproShield recommends applying a bead of VaproBond as an additional solution to pressure rolling.



- Sustains a maximum **12 months** UV and climate exposure prior to cladding installation.
- During field installation PanelShield SA must be protected at the leading edge to ensure liquid water does not travel behind the membrane.
- Apply VaproCaps™ to secure membrane during shipping and storage

Storage

Store material rolls on end in original packaging. Protect rolls from direct sunlight and inclement weather until ready for use.

Substrate Information

- Substrates must be clean and free of any contaminants.
- Substrate surface must be dry to the touch with the ambient temperature above 20°F (-6°C).

PRIMER IS NOT RECOMMENDED OR REQUIRED

Substrates

- Exterior Gypsum Sheathing
- Rigid Insulation
- OSB
- Concrete
- Brick
- Plywood
- Metal (Steel, Aluminum)
- Fiberglass Window and Door Frames

Adhesive Curing Time

Full adhesion will vary depending on job site weather conditions. **Pressure with roller is required.**

Floor Line Movement

View details for floor line and seismic joints at VaproShield.com.

Penetrations

Window and door penetrations can be detailed pre or post installation of the field membrane. Always ensure shingle fashion result is achieved.

Warranty Information

Scan the QR code to complete a warranty request form.

Additional Details and Sequences

Scan QR code for additional sequences and details including field/factory installation or Contact us at 866-731-7663, or email: technical@vaprosshield.com



Panelized Construction: Factory Installation - Step 1

PRODUCT DESCRIPTION

PanelShield SA Self-Adhered is a self-adhered, water resistive vapor permeable air barrier sheet membrane.

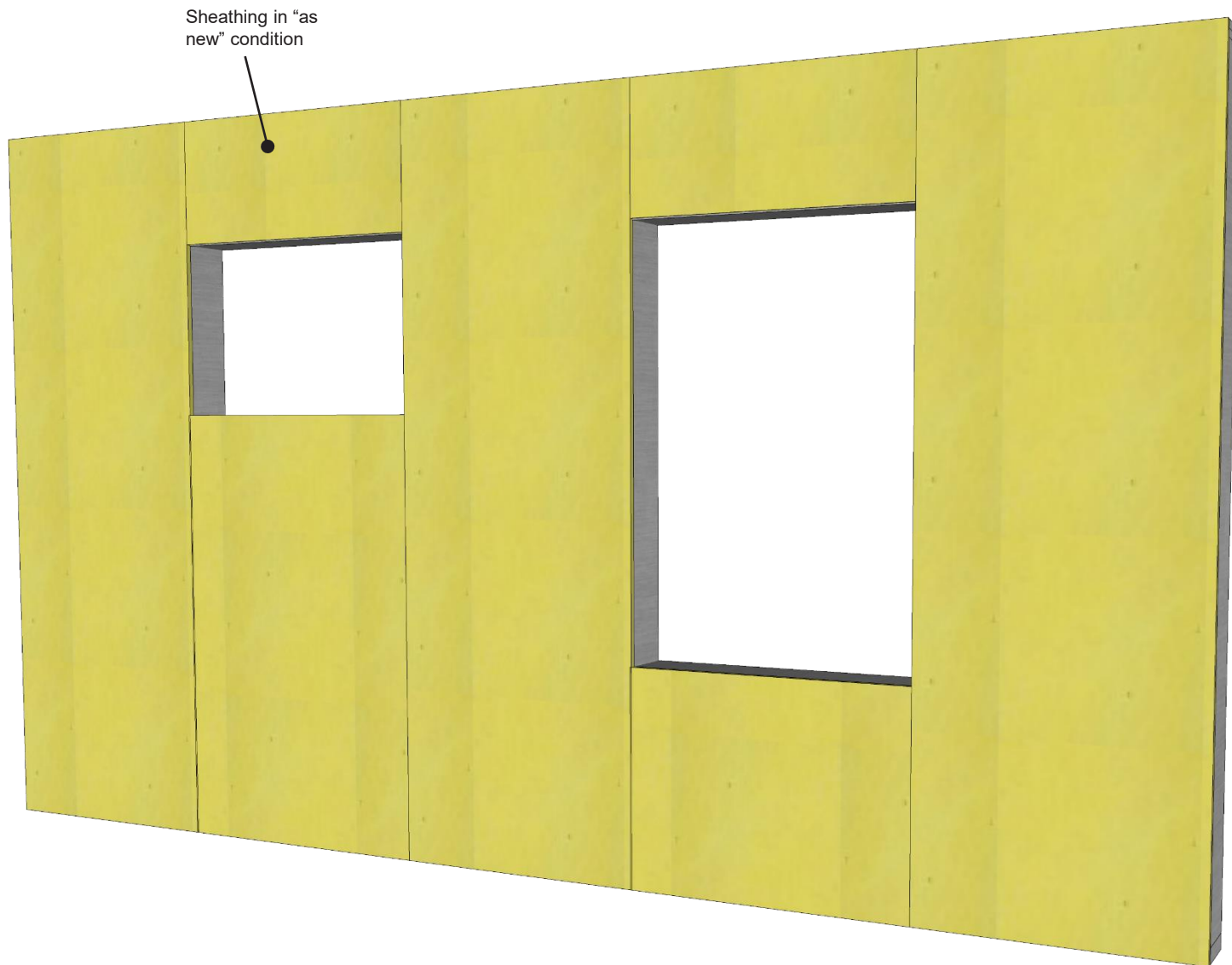
DISCLAIMER

Detail sketch is generic, representing suggested best practices for VaproShield materials, and does not represent a specific job site condition and therefore may not be applicable to certain projects. Detail sketch is designed for use as a reference and must be approved by the designer/ consultant of record for each project prior to installation by the subcontractor. Changes and approvals of VaproShield details are the sole responsibility of the designer/consultant of record. VaproShield is **not** the designer of record for building enclosure details and takes no responsibility for the accuracy or interpretation of actual project site conditions.

Always check www.VaproShield.com for the latest details and installation instructions

VaproShield LLC
915 26th Ave. N.W. Suite C5
Gig Harbor, WA 98335
Toll Free: 1.866.731.7663
www.VaproShield.com
© VaproShield 3/15/2016

VaproShield Canada
101-1001 West Broadway Suite 545
Vancouver, B.C. V6H 4E4, Canada
Toll Free: 1.866.871.8263
www.VaproShield.ca



PRODUCT DESCRIPTION

PanelShield SA Self-Adhered is a self-adhered, water resistive vapor permeable air barrier sheet membrane.

DISCLAIMER

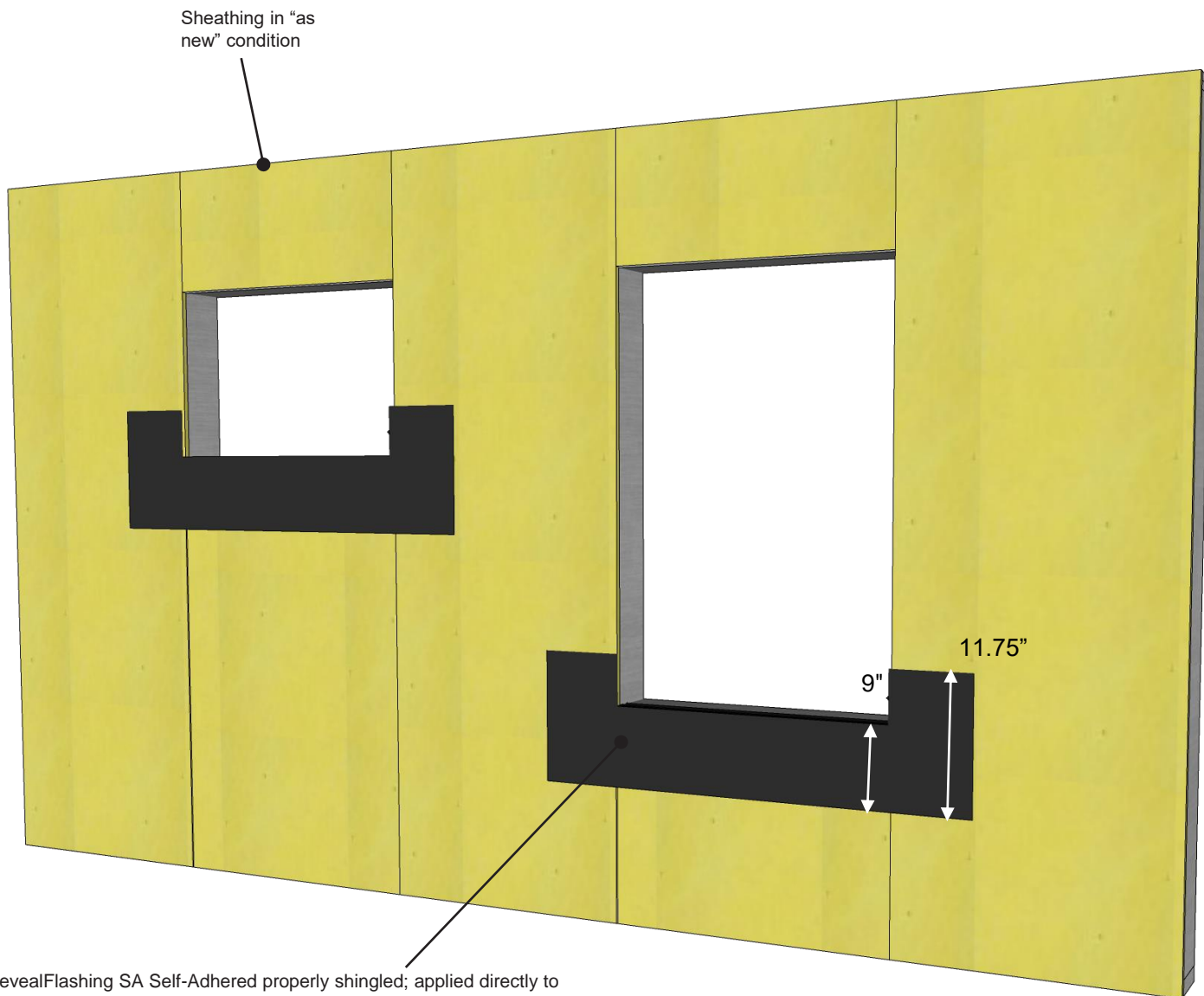
Detail sketch is generic, representing suggested best practices for VaproShield materials, and does not represent a specific job site condition and therefore may not be applicable to certain projects. Detail sketch is designed for use as a reference and must be approved by the designer/ consultant of record for each project prior to installation by the subcontractor. Changes and approvals of VaproShield details are the sole responsibility of the designer/consultant of record. VaproShield is **not** the designer of record for building enclosure details and takes no responsibility for the accuracy or interpretation of actual project site conditions.

Always check www.VaproShield.com for the latest details and installation instructions

VaproShield LLC
915 26th Ave. N.W. Suite C5
Gig Harbor, WA 98335
Toll Free: 1.866.731.7663
www.VaproShield.com
© VaproShield 3/15/2016

VaproShield Canada
101-1001 West Broadway Suite 545
Vancouver, B.C. V6H 4E4, Canada
Toll Free: 1.866.871.8263
www.VaproShield.ca

Panelized Construction: Factory Installation - Step 2



RevealFlashing SA Self-Adhered properly shingled; applied directly to sheathing + folded 2.75" (70 mm) inside of R.O.

Note: Total of 11.75" (298.5 mm) of flashing should be used:

- 9" (228.6 mm) of flashing should be left on the face of the sheathing
- 6" (152.4 mm) of release film from the bottom of the flashing to be left attached for shingling over membrane.

PRODUCT DESCRIPTION

PanelShield SA Self-Adhered is a self-adhered, water resistive vapor permeable air barrier sheet membrane.

DISCLAIMER

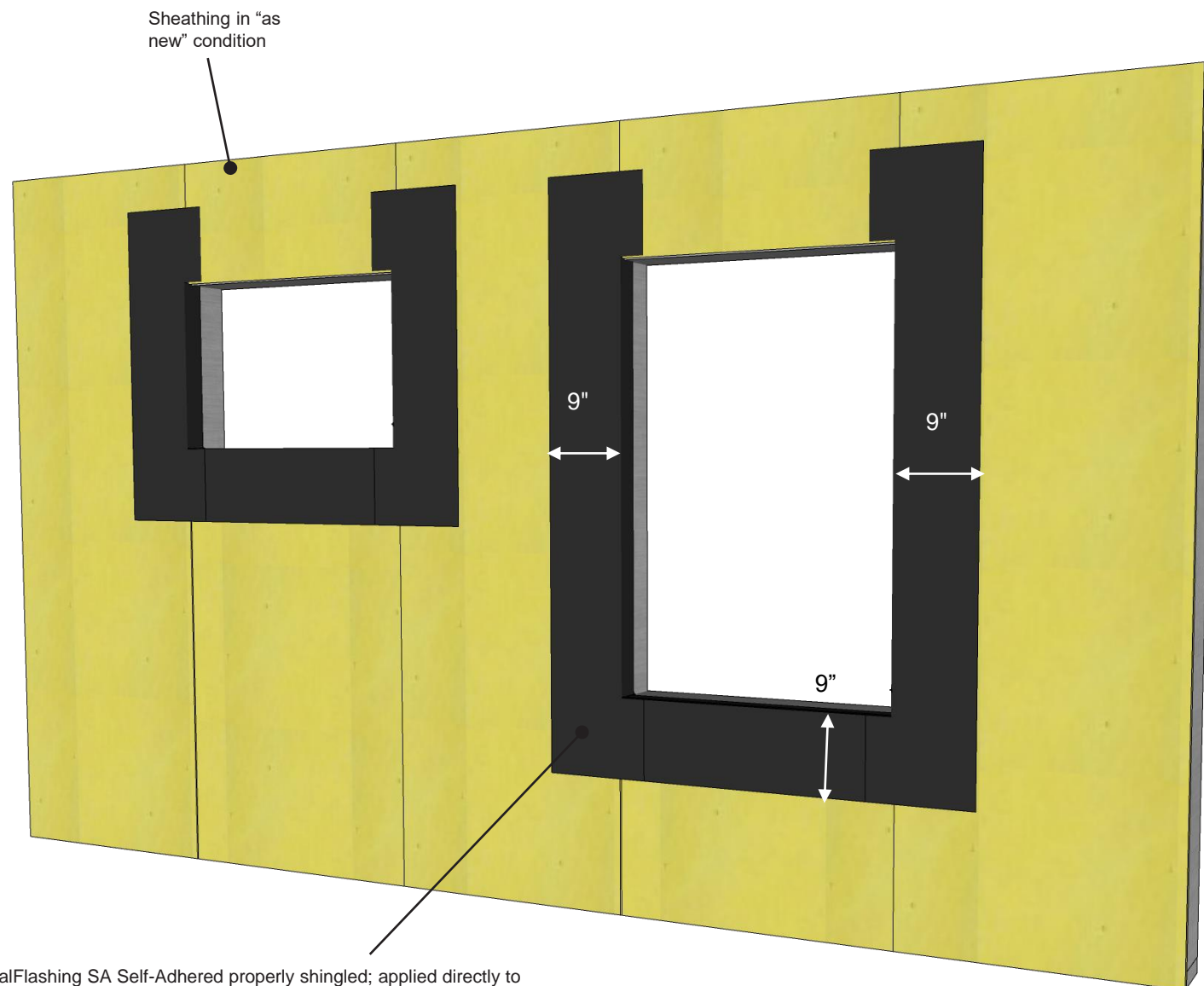
Detail sketch is generic, representing suggested best practices for VaproShield materials, and does not represent a specific job site condition and therefore may not be applicable to certain projects. Detail sketch is designed for use as a reference and must be approved by the designer/ consultant of record for each project prior to installation by the subcontractor. Changes and approvals of VaproShield details are the sole responsibility of the designer/consultant of record. VaproShield is **not** the designer of record for building enclosure details and takes no responsibility for the accuracy or interpretation of actual project site conditions.

Always check www.VaproShield.com for the latest details and installation instructions

VaproShield LLC
915 26th Ave. N.W. Suite C5
Gig Harbor, WA 98335
Toll Free: 1.866.731.7663
www.VaproShield.com
© VaproShield 3/15/2016

VaproShield Canada
101-1001 West Broadway Suite 545
Vancouver, B.C. V6H 4E4, Canada
Toll Free: 1.866.871.8263
www.VaproShield.ca

Panelized Construction: Factory Installation - Step 3



RevealFlashing SA Self-Adhered properly shingled; applied directly to sheathing + folded 2.75" (70 mm) inside of R.O.

Note: Total of 11.75" (298.5 mm) of flashing should be used:

- 9" (228.6 mm) of flashing should be left on the face of the sheathing
- 6" (152.4 mm) of release film from the bottom of the flashing to be left attached for shingling over membrane.

PRODUCT DESCRIPTION

PanelShield SA Self-Adhered is a self-adhered, water resistive vapor permeable air barrier sheet membrane.

DISCLAIMER

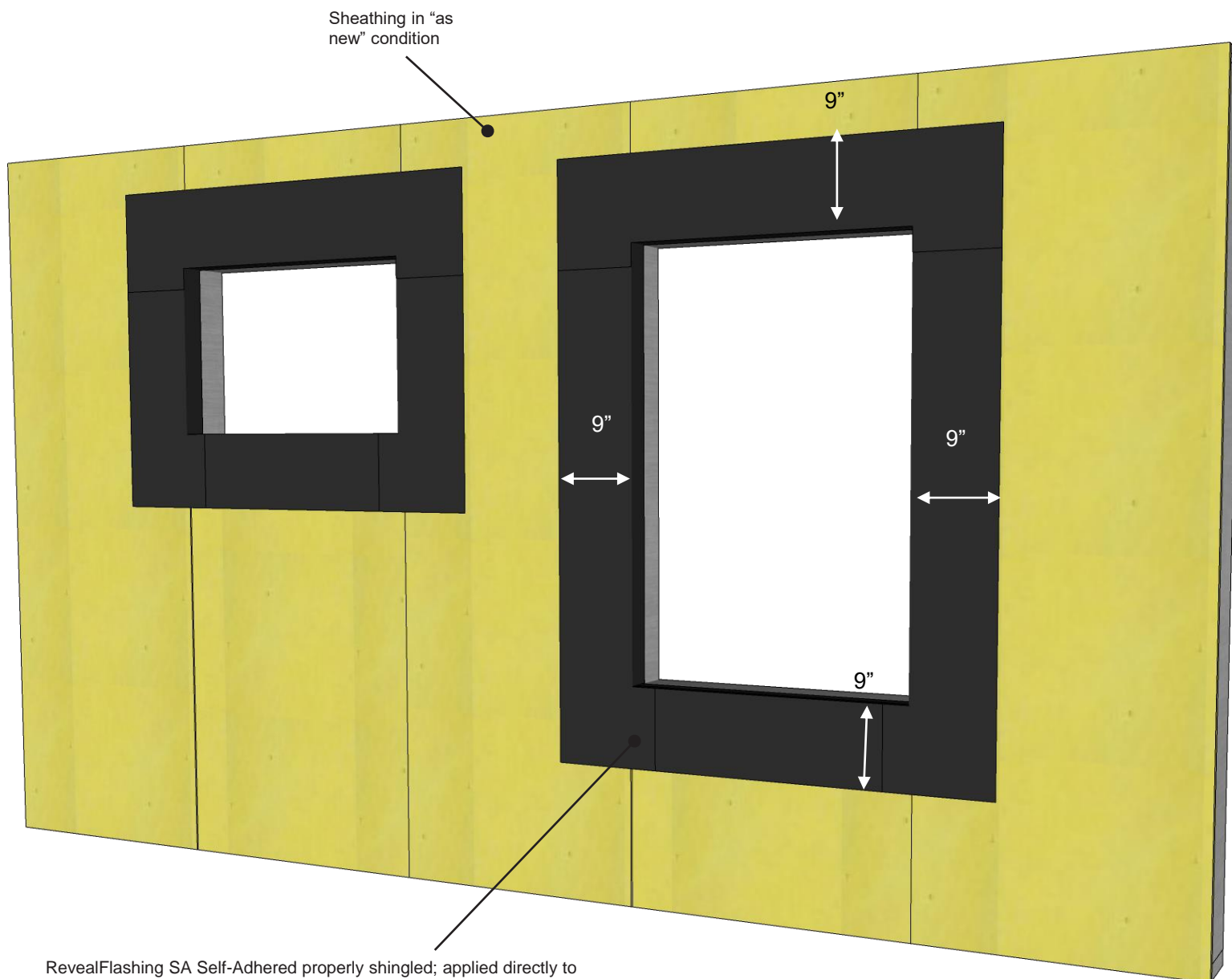
Detail sketch is generic, representing suggested best practices for VaproShield materials, and does not represent a specific job site condition and therefore may not be applicable to certain projects. Detail sketch is designed for use as a reference and must be approved by the designer/ consultant of record for each project prior to installation by the subcontractor. Changes and approvals of VaproShield details are the sole responsibility of the designer/consultant of record. VaproShield is **not** the designer of record for building enclosure details and takes no responsibility for the accuracy or interpretation of actual project site conditions.

Always check www.VaproShield.com for the latest details and installation instructions

VaproShield LLC
915 26th Ave. N.W. Suite C5
Gig Harbor, WA 98335
Toll Free: 1.866.731.7663
www.VaproShield.com
© VaproShield 3/15/2016

VaproShield Canada
101-1001 West Broadway Suite 545
Vancouver, B.C. V6H 4E4, Canada
Toll Free: 1.866.871.8263
www.VaproShield.ca

Panelized Construction: Factory Installation - Step 4



RevealFlashing SA Self-Adhered properly shingled; applied directly to sheathing + folded 2.75" (70 mm) inside of R.O.

Note: Total of 11.75" (298.5 mm) of flashing should be used:

- 9" (228.6 mm) of flashing should be left on the face of the sheathing
- 6" (152.4 mm) of release film from the bottom of the flashing to be left attached for shingling over membrane.

PRODUCT DESCRIPTION

PanelShield SA Self-Adhered is a self-adhered, water resistive vapor permeable air barrier sheet membrane.

DISCLAIMER

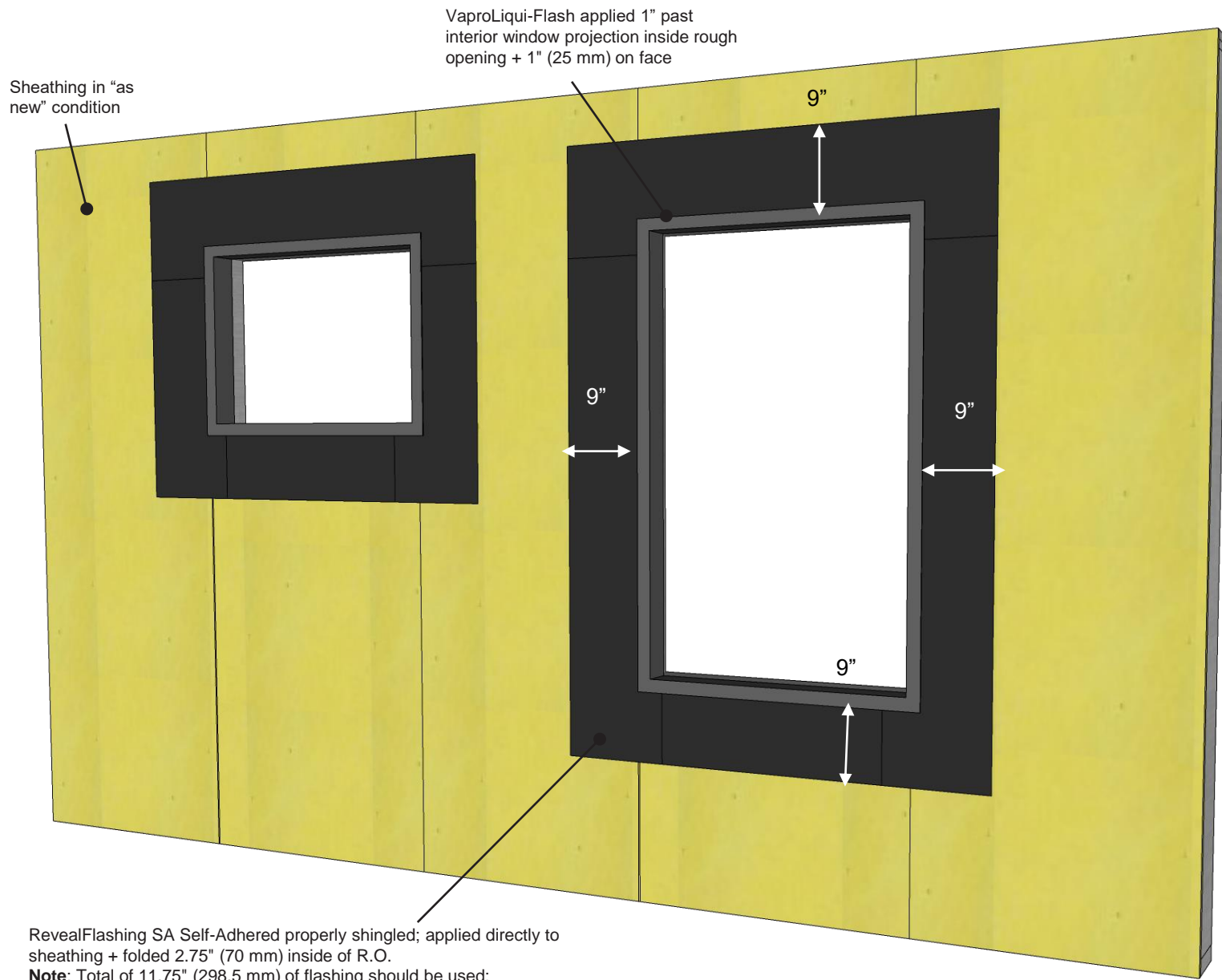
Detail sketch is generic, representing suggested best practices for VaproShield materials, and does not represent a specific job site condition and therefore may not be applicable to certain projects. Detail sketch is designed for use as a reference and must be approved by the designer/ consultant of record for each project prior to installation by the subcontractor. Changes and approvals of VaproShield details are the sole responsibility of the designer/consultant of record. VaproShield is **not** the designer of record for building enclosure details and takes no responsibility for the accuracy or interpretation of actual project site conditions.

Always check www.VaproShield.com for the latest details and installation instructions

VaproShield LLC
915 26th Ave. N.W. Suite C5
Gig Harbor, WA 98335
Toll Free: 1.866.731.7663
www.VaproShield.com
© VaproShield 3/15/2016

VaproShield Canada
101-1001 West Broadway Suite 545
Vancouver, B.C. V6H 4E4, Canada
Toll Free: 1.866.871.8263
www.VaproShield.ca

Panelized Construction: Factory Installation - Step 5



RevealFlashing SA Self-Adhered properly shingled; applied directly to sheathing + folded 2.75" (70 mm) inside of R.O.

Note: Total of 11.75" (298.5 mm) of flashing should be used:

- 9" (228.6 mm) of flashing should be left on the face of the sheathing
- 6" (152.4 mm) of release film from the bottom of the flashing to be left attached for shingling over membrane.

Panelized Construction: Factory Installation - Step 6

PRODUCT DESCRIPTION

PanelShield SA Self-Adhered is a self-adhered, water resistive vapor permeable air barrier sheet membrane.

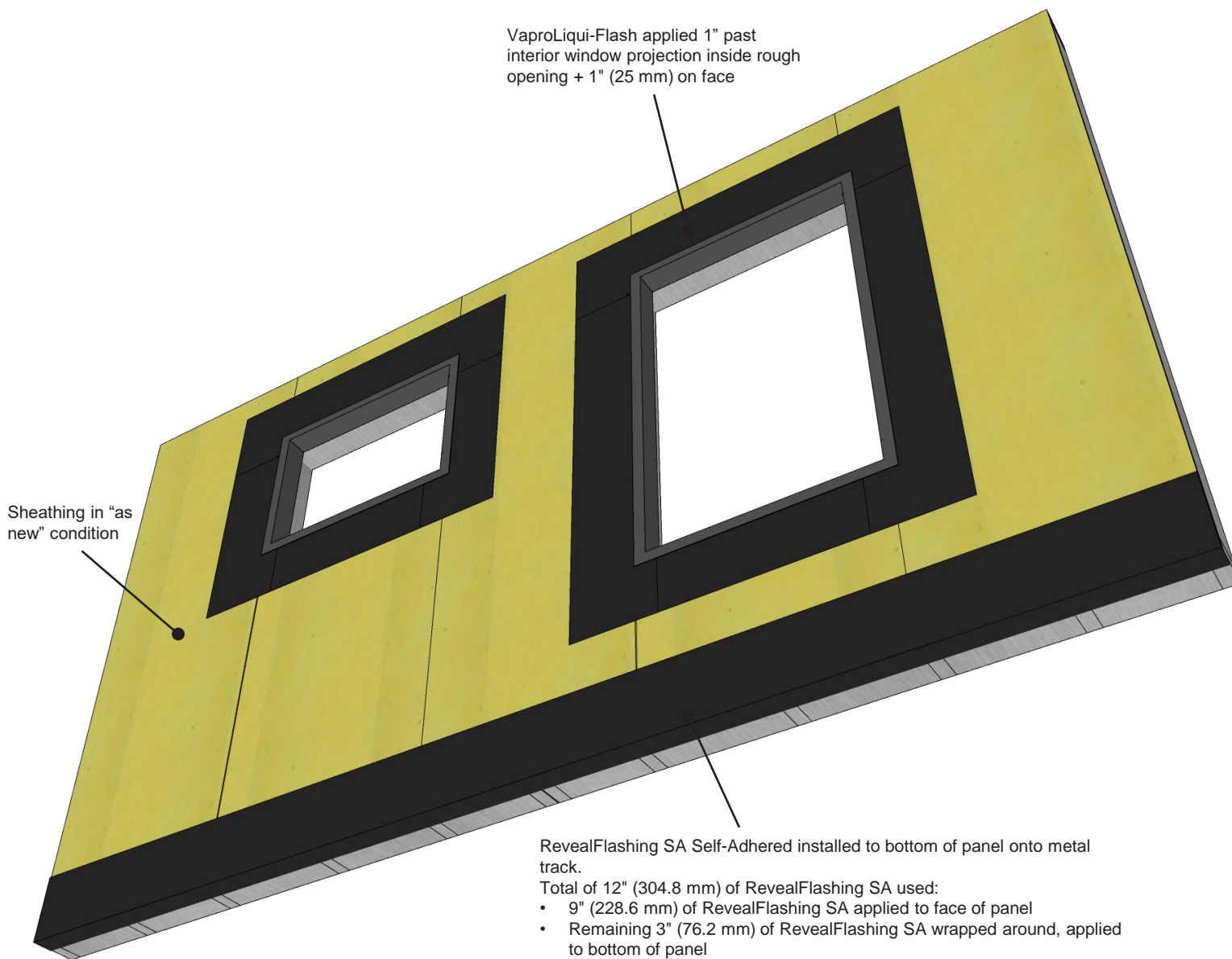
DISCLAIMER

Detail sketch is generic, representing suggested best practices for VaproShield materials, and does not represent a specific job site condition and therefore may not be applicable to certain projects. Detail sketch is designed for use as a reference and must be approved by the designer/ consultant of record for each project prior to installation by the subcontractor. Changes and approvals of VaproShield details are the sole responsibility of the designer/consultant of record. VaproShield is **not** the designer of record for building enclosure details and takes no responsibility for the accuracy or interpretation of actual project site conditions.

Always check www.VaproShield.com for the latest details and installation instructions

VaproShield LLC
915 26th Ave. N.W. Suite C5
Gig Harbor, WA 98335
Toll Free: 1.866.731.7663
www.VaproShield.com
© VaproShield 3/15/2016

VaproShield Canada
101-1001 West Broadway Suite 545
Vancouver, B.C. V6H 4E4, Canada
Toll Free: 1.866.871.8263
www.VaproShield.ca



Panelized Construction: Factory Installation - Step 7

PRODUCT DESCRIPTION

PanelShield SA Self-Adhered is a self-adhered, water resistive vapor permeable air barrier sheet membrane.

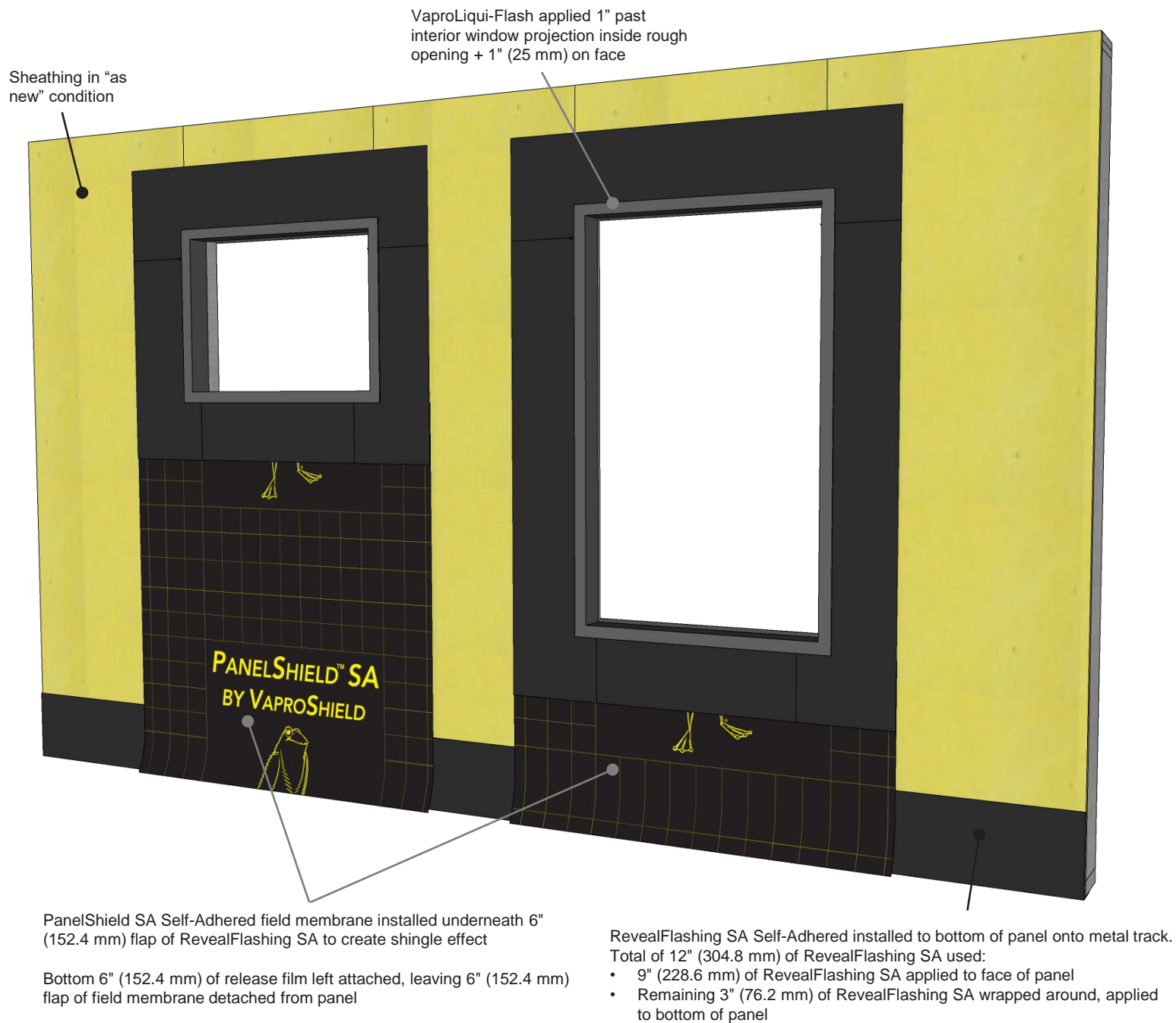
DISCLAIMER

Detail sketch is generic, representing suggested best practices for VaproShield materials, and does not represent a specific job site condition and therefore may not be applicable to certain projects. Detail sketch is designed for use as a reference and must be approved by the designer/ consultant of record for each project prior to installation by the subcontractor. Changes and approvals of VaproShield details are the sole responsibility of the designer/consultant of record. VaproShield is **not** the designer of record for building enclosure details and takes no responsibility for the accuracy or interpretation of actual project site conditions.

Always check www.VaproShield.com for the latest details and installation instructions

VaproShield LLC
915 26th Ave. N.W. Suite C5
Gig Harbor, WA 98335
Toll Free: 1.866.731.7663
www.VaproShield.com
© VaproShield 3/15/2016

VaproShield Canada
101-1001 West Broadway Suite 545
Vancouver, B.C. V6H 4E4, Canada
Toll Free: 1.866.871.8263
www.VaproShield.ca



DRAWN BY: CD
DATE: 05.17.17
REF: 181-8

PRODUCT DESCRIPTION

PanelShield SA Self-Adhered is a self-adhered, water resistive vapor permeable air barrier sheet membrane.

DISCLAIMER

Detail sketch is generic, representing suggested best practices for VaproShield materials, and does not represent a specific job site condition and therefore may not be applicable to certain projects. Detail sketch is designed for use as a reference and must be approved by the designer/ consultant of record for each project prior to installation by the subcontractor. Changes and approvals of VaproShield details are the sole responsibility of the designer/consultant of record. VaproShield is **not** the designer of record for building enclosure details and takes no responsibility for the accuracy or interpretation of actual project site conditions.

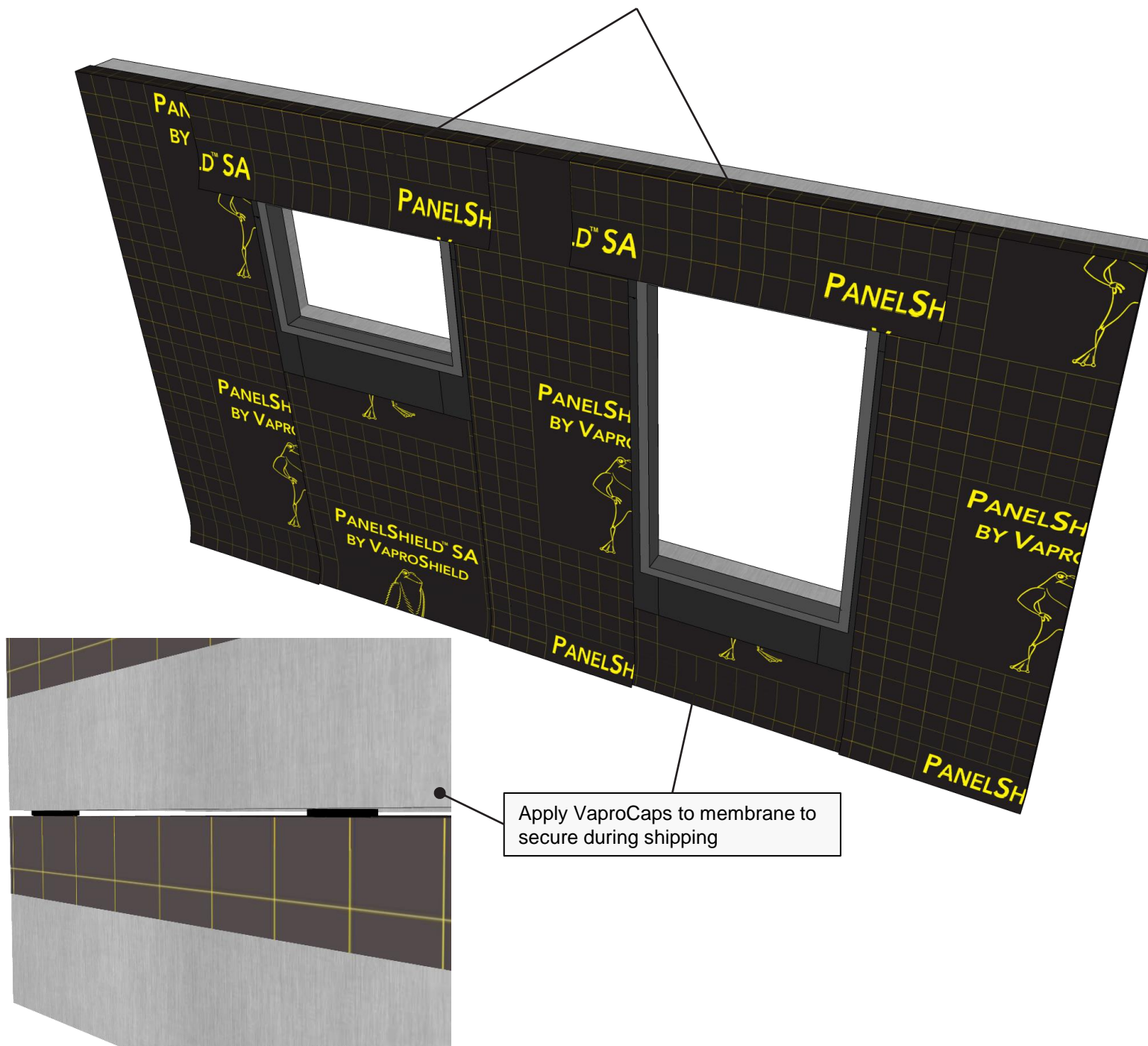
Always check www.VaproShield.com for the latest details and installation instructions

VaproShield LLC
915 26th Ave. N.W. Suite C5
Gig Harbor, WA 98335
Toll Free: 1.866.731.7663
www.VaproShield.com
© VaproShield 3/15/2016

VaproShield Canada
101-1001 West Broadway Suite 545
Vancouver, B.C. V6H 4E4, Canada
Toll Free: 1.866.871.8263
www.VaproShield.ca

Panelized Construction: Factory Installation - Step 9

PanelShield SA Self-Adhered field membrane installed above rough openings and folded 3" (76.2 mm) over the top of panel onto metal track. Leave bottom 6" (152.4 mm) of field membrane unattached with release film intact.



Panelized Construction: Sequential Field Assembly Instructions Overview

Panelized construction in factory settings offers excellent economies of scale to the final installed cost of a WRB/AB material. Ease of access and controlled environmental conditions can drastically improve the quality of the installation. However, if the proper sequencing for a streamlined connection once the panels arrive onsite is not understood from the start, then any improvements in quality will not be realized and could lead to failure of the WRB/AB system.

Always check www.VaproShield.com for the latest details and installation instructions

Panels are trucked to the job site. During both Loading and unloading care **MUST BE TAKEN TO NOT DAMAGE THE PANELSHIELD MATERIAL!**



DISCLAIMER

Detail sketch is generic, representing suggested best practices for VaproShield materials, and does not represent a specific job site condition and therefore may not be applicable to certain projects. Detail sketch is designed for use as a reference and must be approved by the designer/ consultant of record for each project prior to installation by the subcontractor. Changes and approvals of VaproShield details are the sole responsibility of the designer/consultant of record. VaproShield is **not** the designer of record for building enclosure details and takes no responsibility for the accuracy or interpretation of actual project site conditions.

Always check www.VaproShield.com for the latest details and installation instructions

VaproShield LLC
915 26th Ave. N.W. Suite C5
Gig Harbor, WA 98335
Toll Free: 1.866.731.7663
www.VaproShield.com
© VaproShield 3/15/2016

Panels are easily installed to all floors with a crane

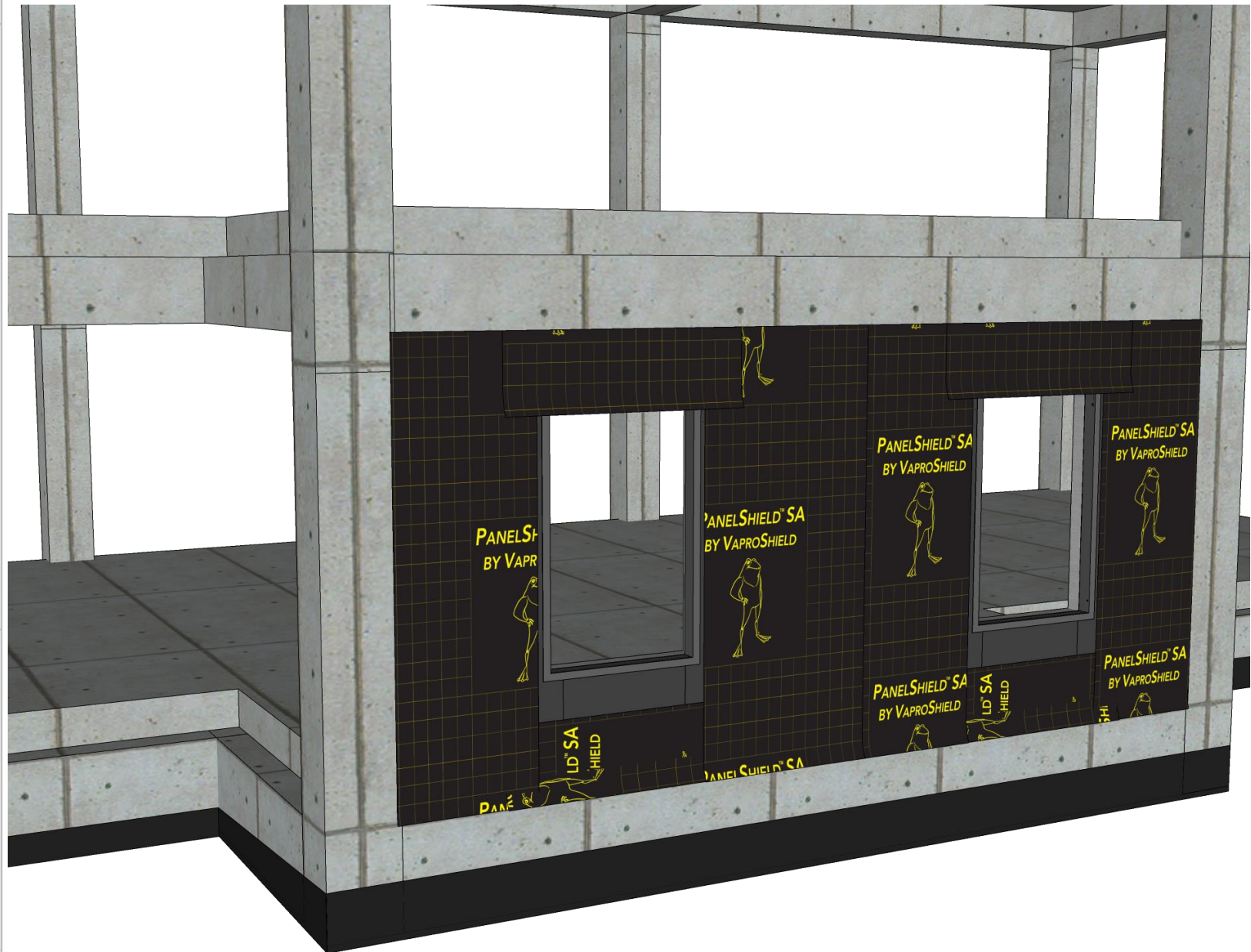


DISCLAIMER

Detail sketch is generic, representing suggested best practices for VaproShield materials, and does not represent a specific job site condition and therefore may not be applicable to certain projects. Detail sketch is designed for use as a reference and must be approved by the designer/consultant of record for each project prior to installation by the subcontractor. Changes and approvals of VaproShield details are the sole responsibility of the designer/consultant of record. VaproShield is **not** the designer of record for building enclosure details and takes no responsibility for the accuracy or interpretation of actual project site conditions.

Always check www.VaproShield.com for the latest details and installation instructions

Place fully wrapped panel into place

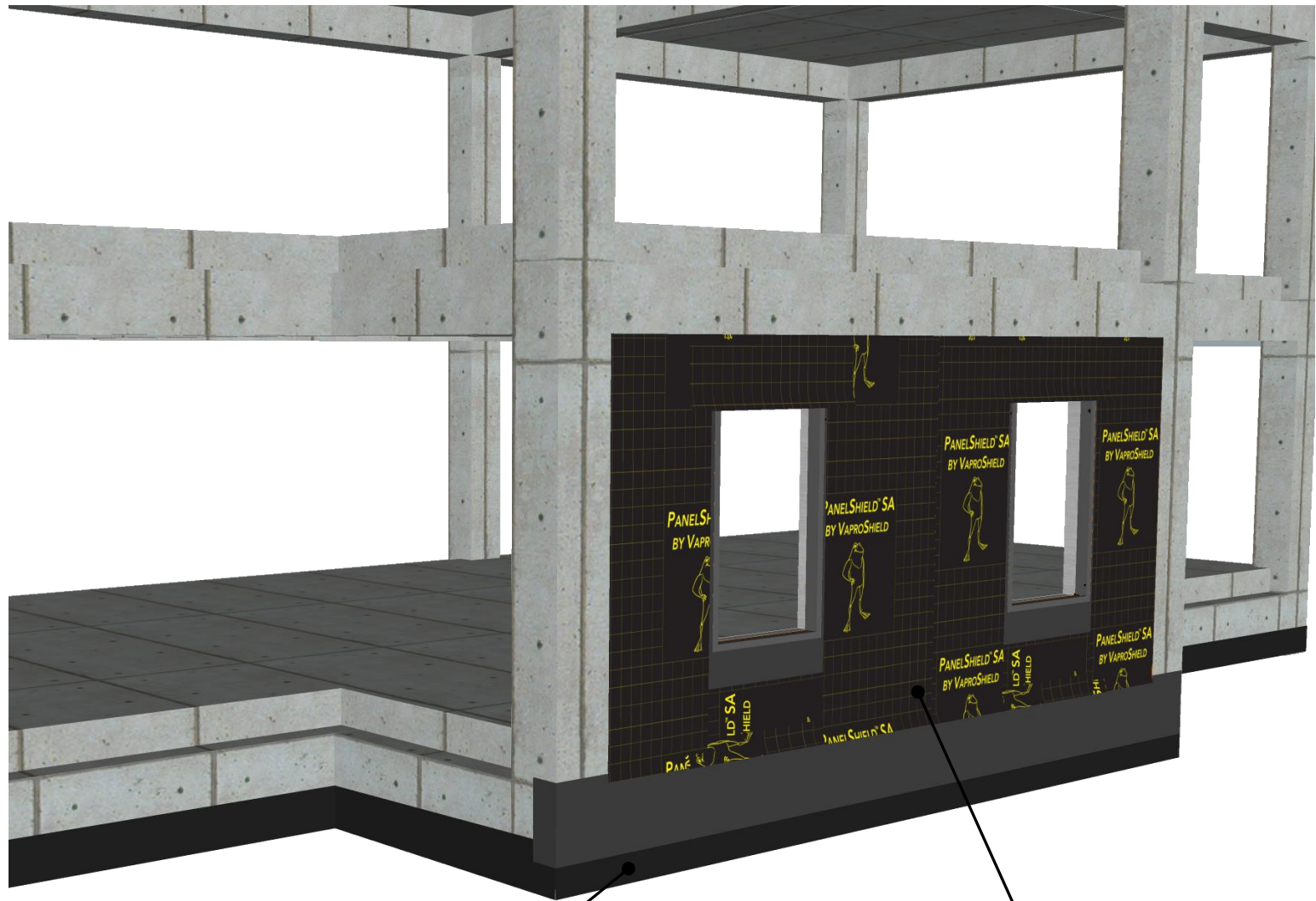


DISCLAIMER

Detail sketch is generic, representing suggested best practices for VaproShield materials, and does not represent a specific job site condition and therefore may not be applicable to certain projects. Detail sketch is designed for use as a reference and must be approved by the designer/ consultant of record for each project prior to installation by the subcontractor. Changes and approvals of VaproShield details are the sole responsibility of the designer/consultant of record. VaproShield is **not** the designer of record for building enclosure details and takes no responsibility for the accuracy or interpretation of actual project site conditions.

Always check www.VaproShield.com for the latest details and installation instructions

RevealFlashing SA installs under material left unattached at bottom of panel



DISCLAIMER

Detail sketch is generic, representing suggested best practices for VaproShield materials, and does not represent a specific job site condition and therefore may not be applicable to certain projects. Detail sketch is designed for use as a reference and must be approved by the designer/consultant of record for each project prior to installation by the subcontractor. Changes and approvals of VaproShield details are the sole responsibility of the designer/consultant of record. VaproShield is **not** the designer of record for building enclosure details and takes no responsibility for the accuracy or interpretation of actual project site conditions.

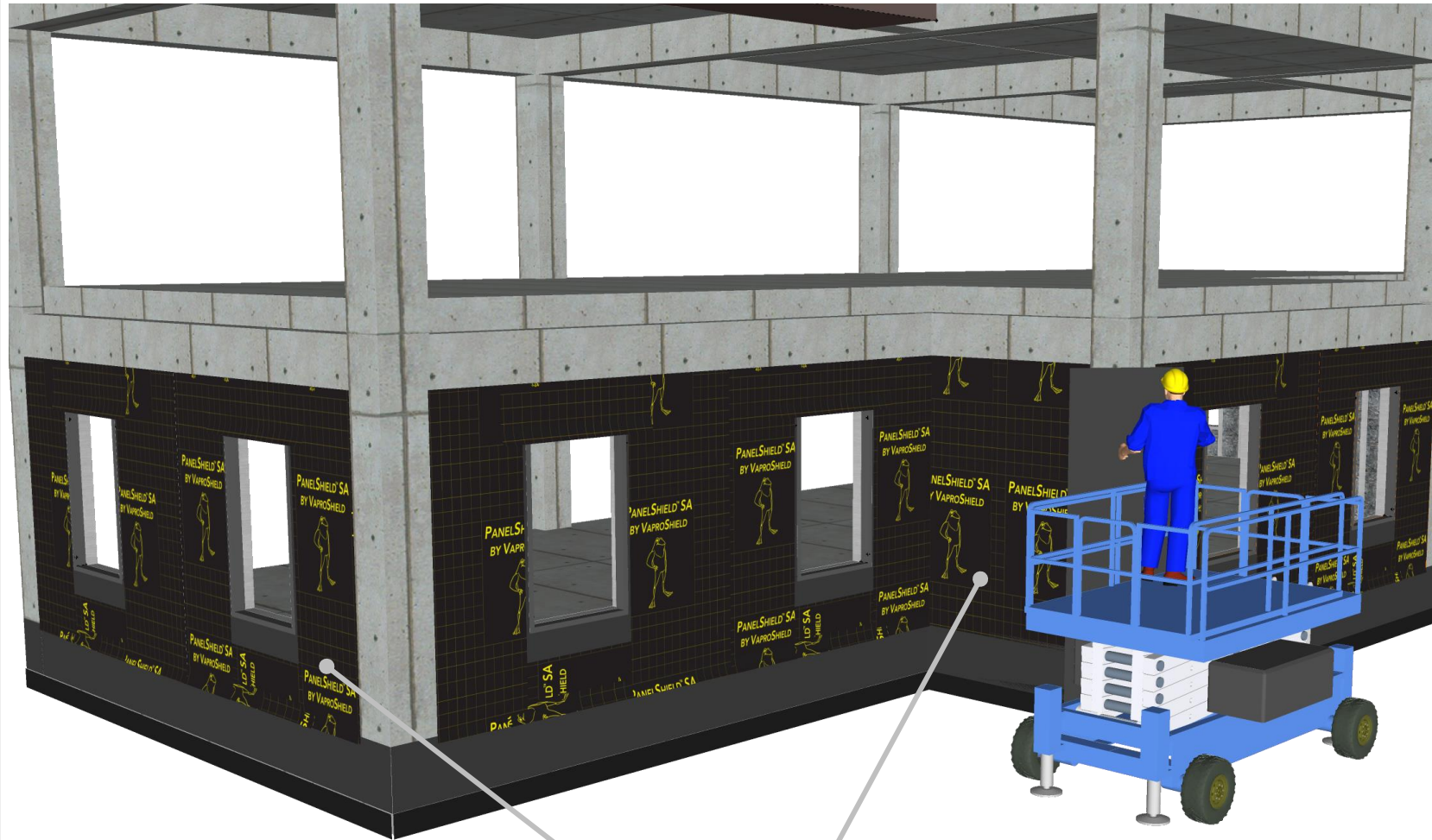
Always check www.VaproShield.com for the latest details and installation instructions

VaproShield LLC
915 26th Ave. N.W. Suite C5
Gig Harbor, WA 98335
Toll Free: 1.866.731.7663
www.VaproShield.com
© VaproShield 3/15/2016

RevealFlashing SA installed beneath detached field membrane, properly shingled (release film left attached on bottom 6" of field membrane, as per Factory Installation best practices)

RevealFlashing SA installed at vertical seams

Fill in bottom floor with panels, installing RevealFlashing SA around entire base of building



DISCLAIMER

Detail sketch is generic, representing suggested best practices for VaproShield materials, and does not represent a specific job site condition and therefore may not be applicable to certain projects. Detail sketch is designed for use as a reference and must be approved by the designer/consultant of record for each project prior to installation by the subcontractor. Changes and approvals of VaproShield details are the sole responsibility of the designer/consultant of record. VaproShield is **not** the designer of record for building enclosure details and takes no responsibility for the accuracy or interpretation of actual project site conditions.

Always check www.VaproShield.com for the latest details and installation instructions

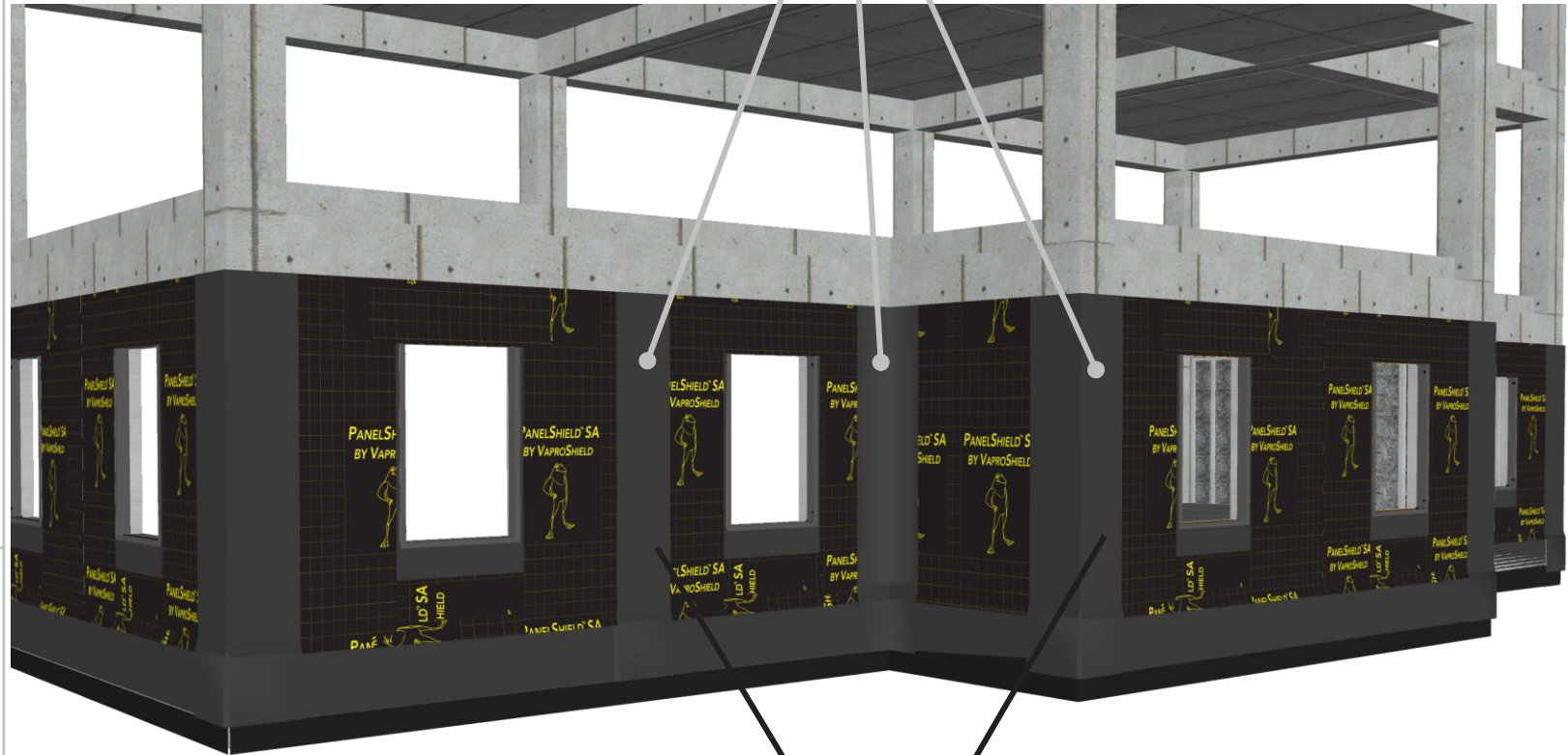
VaproShield LLC
915 26th Ave. N.W. Suite C5
Gig Harbor, WA 98335
Toll Free: 1.866.731.7663
www.VaproShield.com
© VaproShield 3/15/2016

Fill in 1st floor of building with panels, install RevealFlashing SA beneath bottom flap of field membrane with bottom 6" of release film attached

Panelized Construction: Sequential Field Assembly Instructions Overview

Cover inside and outside corners and ALL vertical seams with RevealFlashing SA, which spans corners and seams, and can be installed by one person

RevealFlashing SA installed on inside and outside corners and ALL VERTICAL SEAMS with minimum 6" overlap onto panel



DISCLAIMER

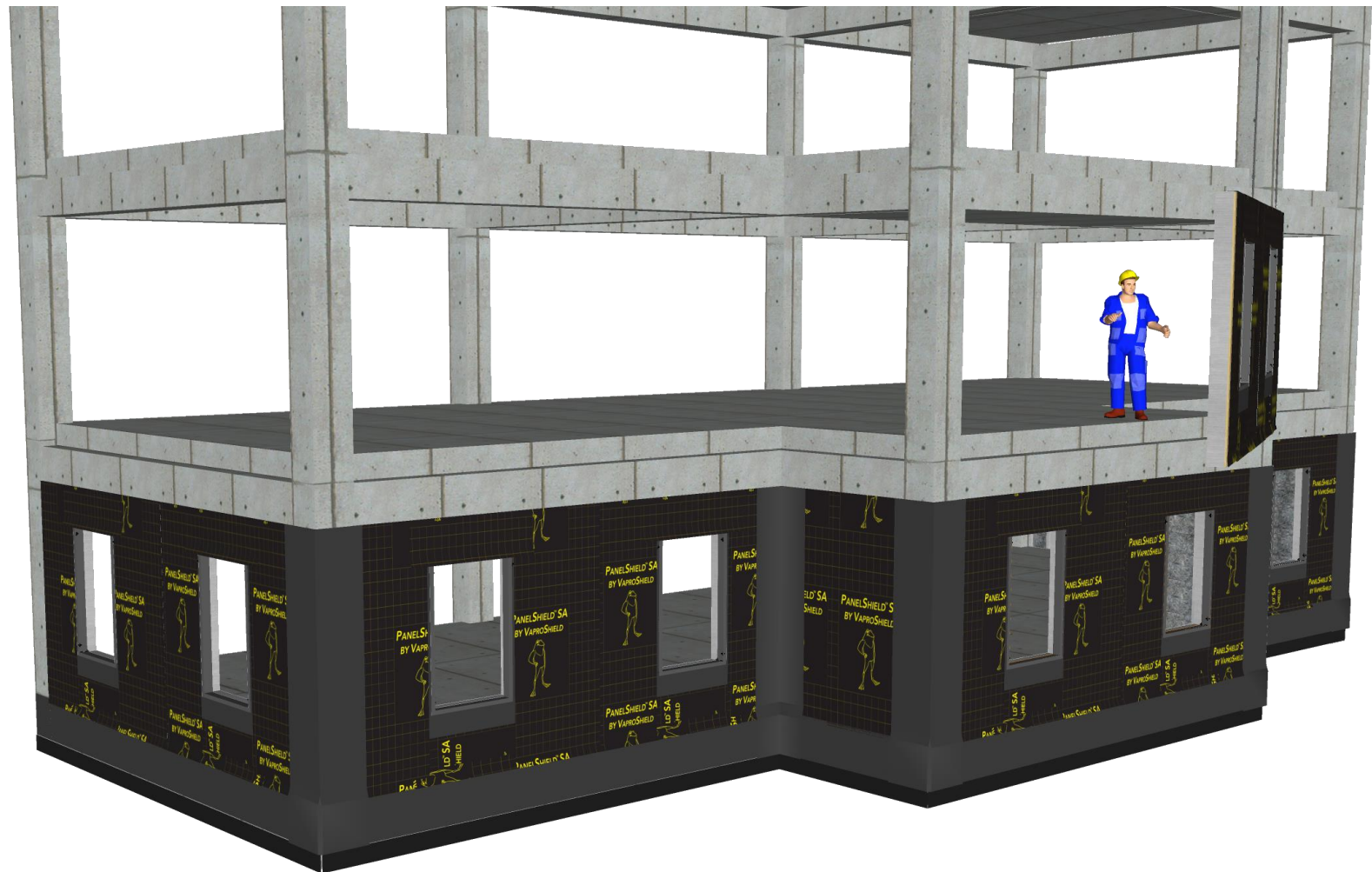
Detail sketch is generic, representing suggested best practices for VaproShield materials, and does not represent a specific job site condition and therefore may not be applicable to certain projects. Detail sketch is designed for use as a reference and must be approved by the designer/ consultant of record for each project prior to installation by the subcontractor. Changes and approvals of VaproShield details are the sole responsibility of the designer/consultant of record. VaproShield is **not** the designer of record for building enclosure details and takes no responsibility for the accuracy or interpretation of actual project site conditions.

Always check www.VaproShield.com for the latest details and installation instructions

VaproShield LLC
915 26th Ave. N.W. Suite C5
Gig Harbor, WA 98335
Toll Free: 1.866.731.7663
www.VaproShield.com
© VaproShield 3/15/2016

VaproShield membranes are designed to be installed with minimal labor and no special tools

Install 2nd floor panels,
then install RevealFlashing
SA underneath upper
course and shingled over
lower course to create
shingle effect



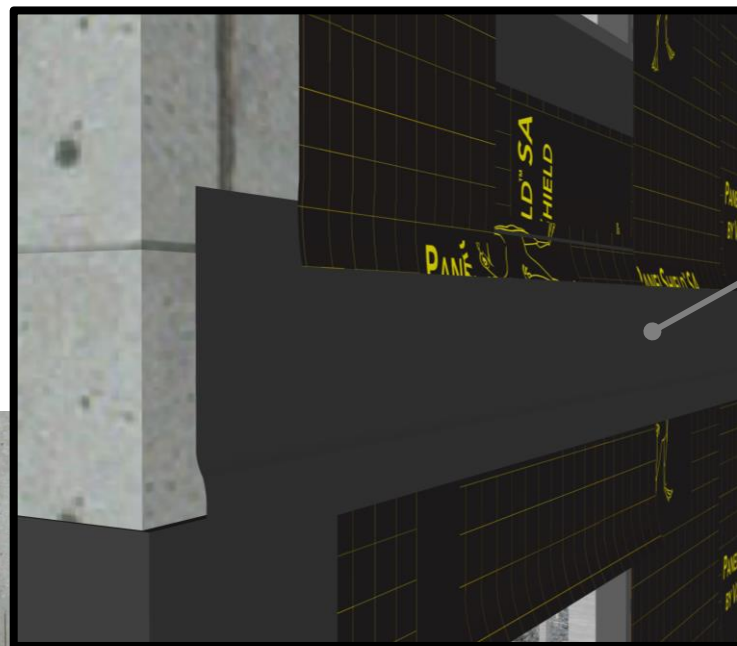
DISCLAIMER

Detail sketch is generic, representing suggested best practices for VaproShield materials, and does not represent a specific job site condition and therefore may not be applicable to certain projects. Detail sketch is designed for use as a reference and must be approved by the designer/ consultant of record for each project prior to installation by the subcontractor. Changes and approvals of VaproShield details are the sole responsibility of the designer/consultant of record. VaproShield is **not** the designer of record for building enclosure details and takes no responsibility for the accuracy or interpretation of actual project site conditions.

Always check www.VaproShield.com
for the latest details and installation
instructions

Panelized Construction: Sequential Field Assembly Instructions Overview

Install 2nd floor panels, then install RevealFlashing SA underneath upper course and shingled over lower course to create shingle effect



RevealFlashing SA installed underneath unattached field membrane on bottom of 2nd story panel

RevealFlashing SA overlaps the top 6" of first floor panel



DISCLAIMER

Detail sketch is generic, representing suggested best practices for VaproShield materials, and does not represent a specific job site condition and therefore may not be applicable to certain projects. Detail sketch is designed for use as a reference and must be approved by the designer/ consultant of record for each project prior to installation by the subcontractor. Changes and approvals of VaproShield details are the sole responsibility of the designer/consultant of record. VaproShield is **not** the designer of record for building enclosure details and takes no responsibility for the accuracy or interpretation of actual project site conditions.

Always check www.VaproShield.com for the latest details and installation instructions

Install 2nd floor panels,
then install RevealFlashing
SA underneath upper
course and shingled over
lower course to create
shingle effect



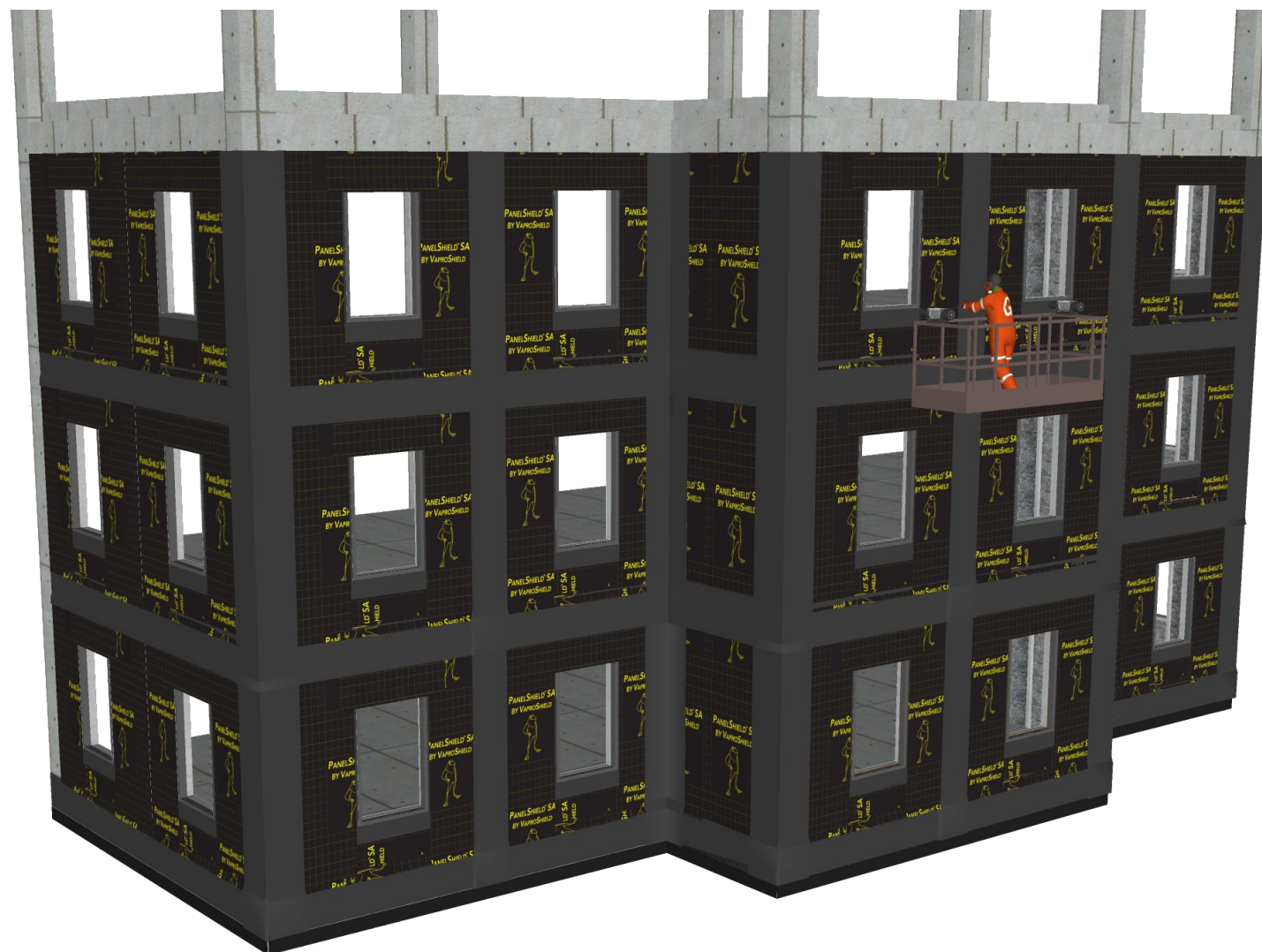
DISCLAIMER

Detail sketch is generic, representing suggested best practices for VaproShield materials, and does not represent a specific job site condition and therefore may not be applicable to certain projects. Detail sketch is designed for use as a reference and must be approved by the designer/ consultant of record for each project prior to installation by the subcontractor. Changes and approvals of VaproShield details are the sole responsibility of the designer/consultant of record. VaproShield is **not** the designer of record for building enclosure details and takes no responsibility for the accuracy or interpretation of actual project site conditions.

Always check www.VaproShield.com
for the latest details and installation
instructions

VaproShield LLC
915 26th Ave. N.W. Suite C5
Gig Harbor, WA 98335
Toll Free: 1.866.731.7663
www.VaproShield.com
© VaproShield 3/15/2016

Continue filling in above floors, using
RevealFlashing SA to
shingle between floors



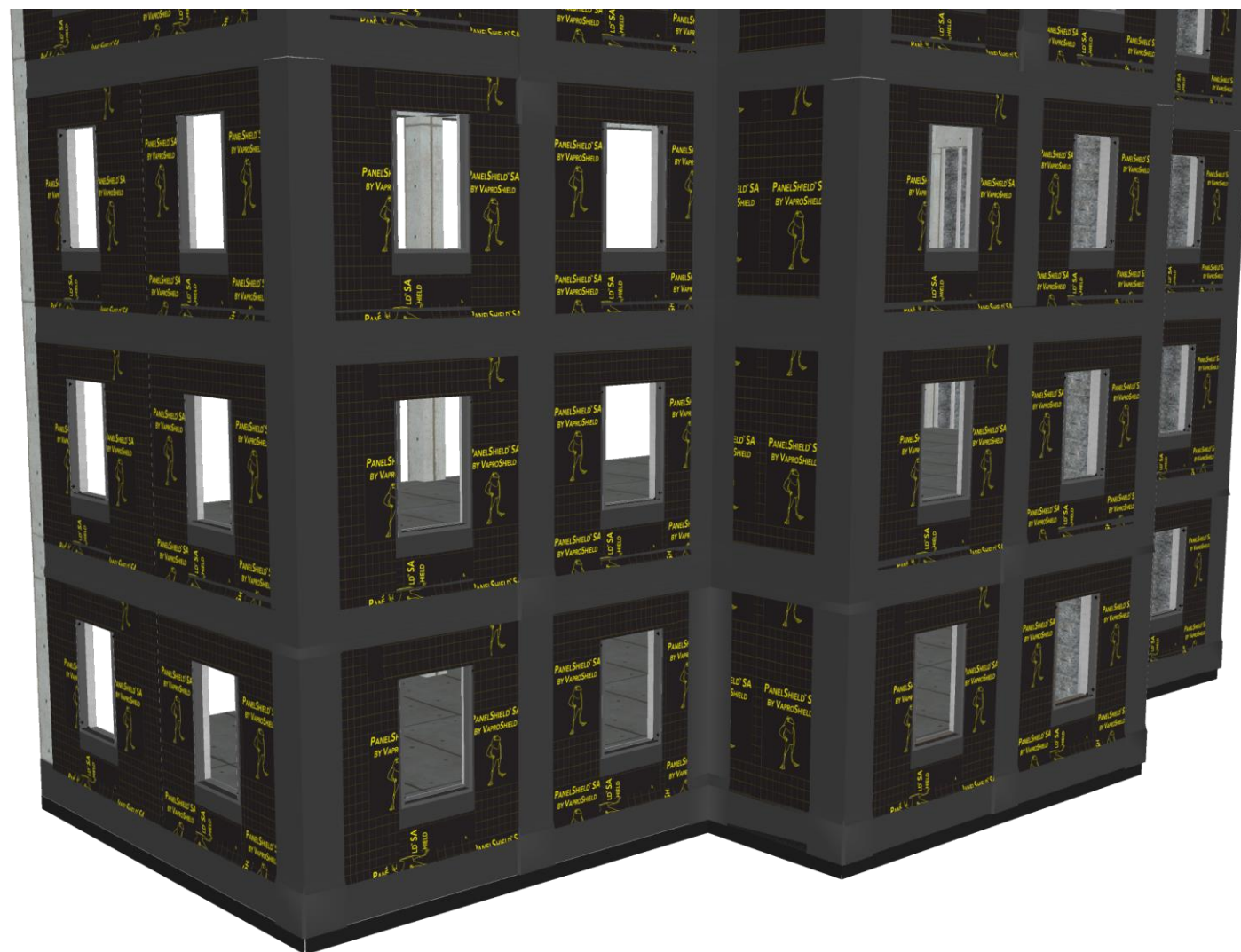
DISCLAIMER

Detail sketch is generic, representing suggested best practices for VaproShield materials, and does not represent a specific job site condition and therefore may not be applicable to certain projects. Detail sketch is designed for use as a reference and must be approved by the designer/ consultant of record for each project prior to installation by the subcontractor. Changes and approvals of VaproShield details are the sole responsibility of the designer/consultant of record. VaproShield is **not** the designer of record for building enclosure details and takes no responsibility for the accuracy or interpretation of actual project site conditions.

Always check www.VaproShield.com
for the latest details and installation
instructions

VaproShield LLC
915 26th Ave. N.W. Suite C5
Gig Harbor, WA 98335
Toll Free: 1.866.731.7663
www.VaproShield.com
© VaproShield 3/15/2016

Continue filling in above floors, using
RevealFlashing SA to
shingle between floors



DISCLAIMER

Detail sketch is generic, representing suggested best practices for VaproShield materials, and does not represent a specific job site condition and therefore may not be applicable to certain projects. Detail sketch is designed for use as a reference and must be approved by the designer/consultant of record for each project prior to installation by the subcontractor. Changes and approvals of VaproShield details are the sole responsibility of the designer/consultant of record. VaproShield is **not** the designer of record for building enclosure details and takes no responsibility for the accuracy or interpretation of actual project site conditions.

Always check www.VaproShield.com for the latest details and installation instructions

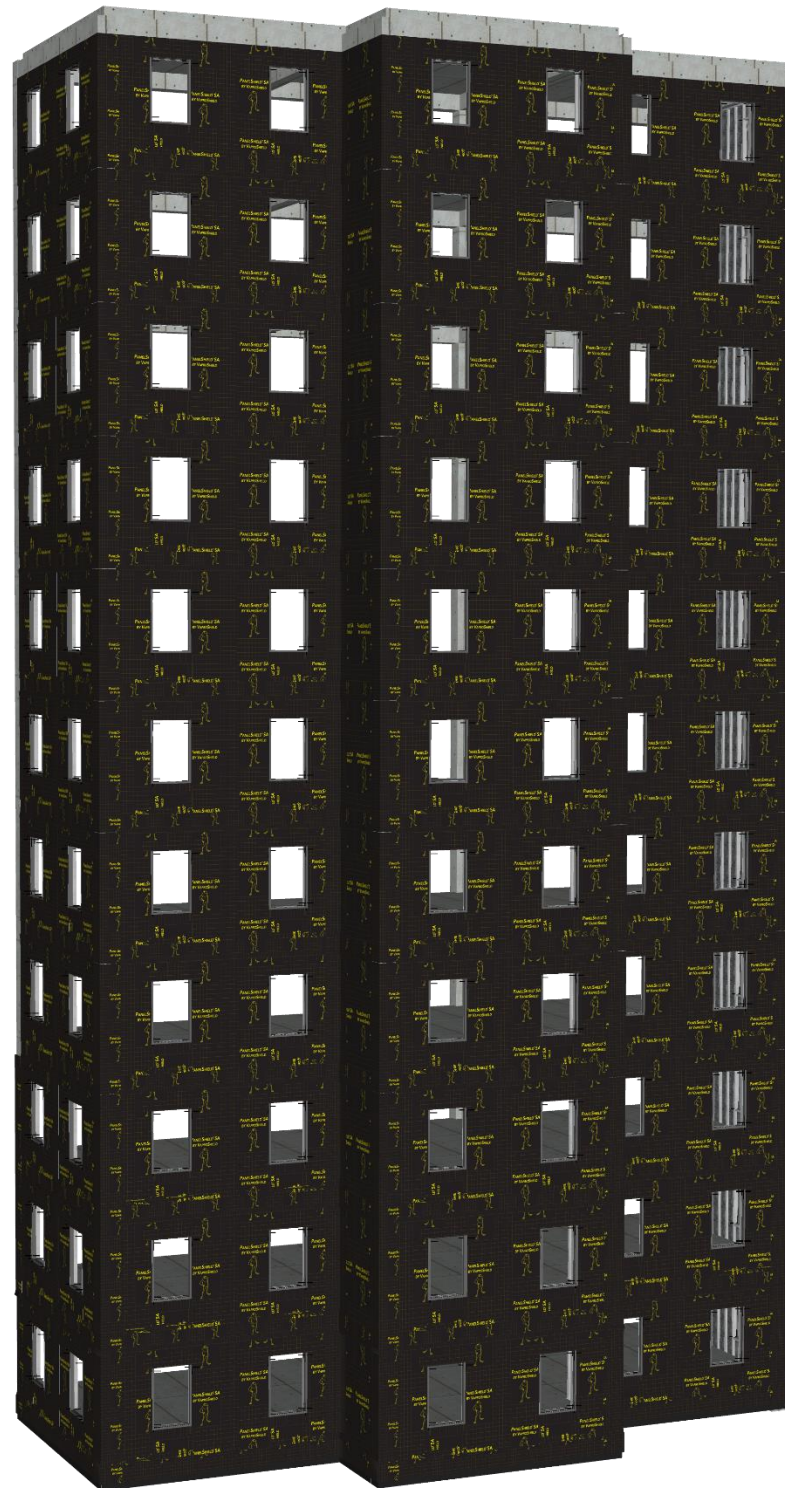
Panelized construction
has no height
constraints and saves
time and labor

DISCLAIMER

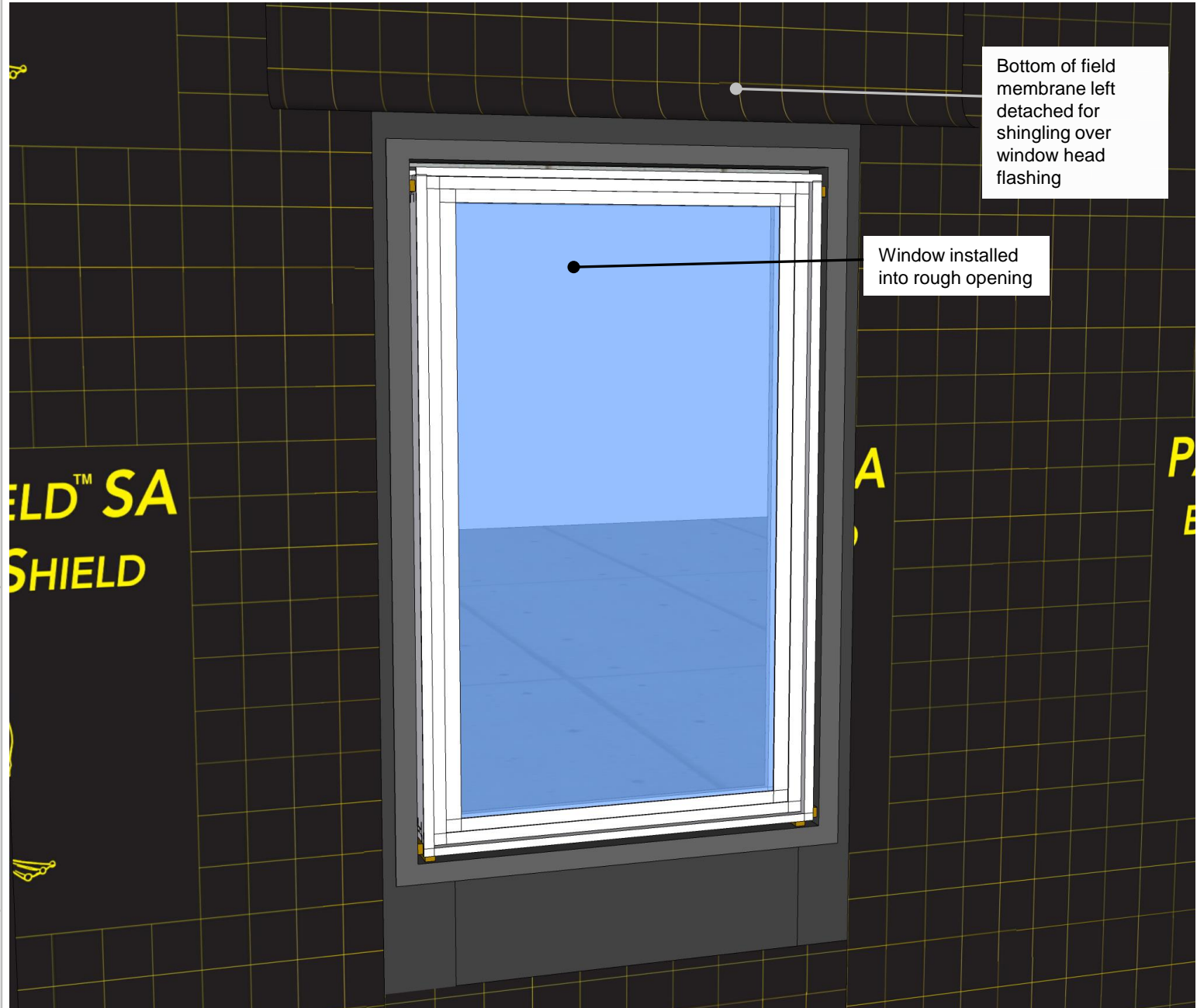
Detail sketch is generic, representing suggested best practices for VaproShield materials, and does not represent a specific job site condition and therefore may not be applicable to certain projects. Detail sketch is designed for use as a reference and must be approved by the designer/ consultant of record for each project prior to installation by the subcontractor. Changes and approvals of VaproShield details are the sole responsibility of the designer/consultant of record. VaproShield is **not** the designer of record for building enclosure details and takes no responsibility for the accuracy or interpretation of actual project site conditions.

Always check www.VaproShield.com
for the latest details and installation
instructions

VaproShield LLC
915 26th Ave. N.W. Suite C5
Gig Harbor, WA 98335
Toll Free: 1.866.731.7663
www.VaproShield.com
© VaproShield 3/15/2016



Place windows into
rough opening



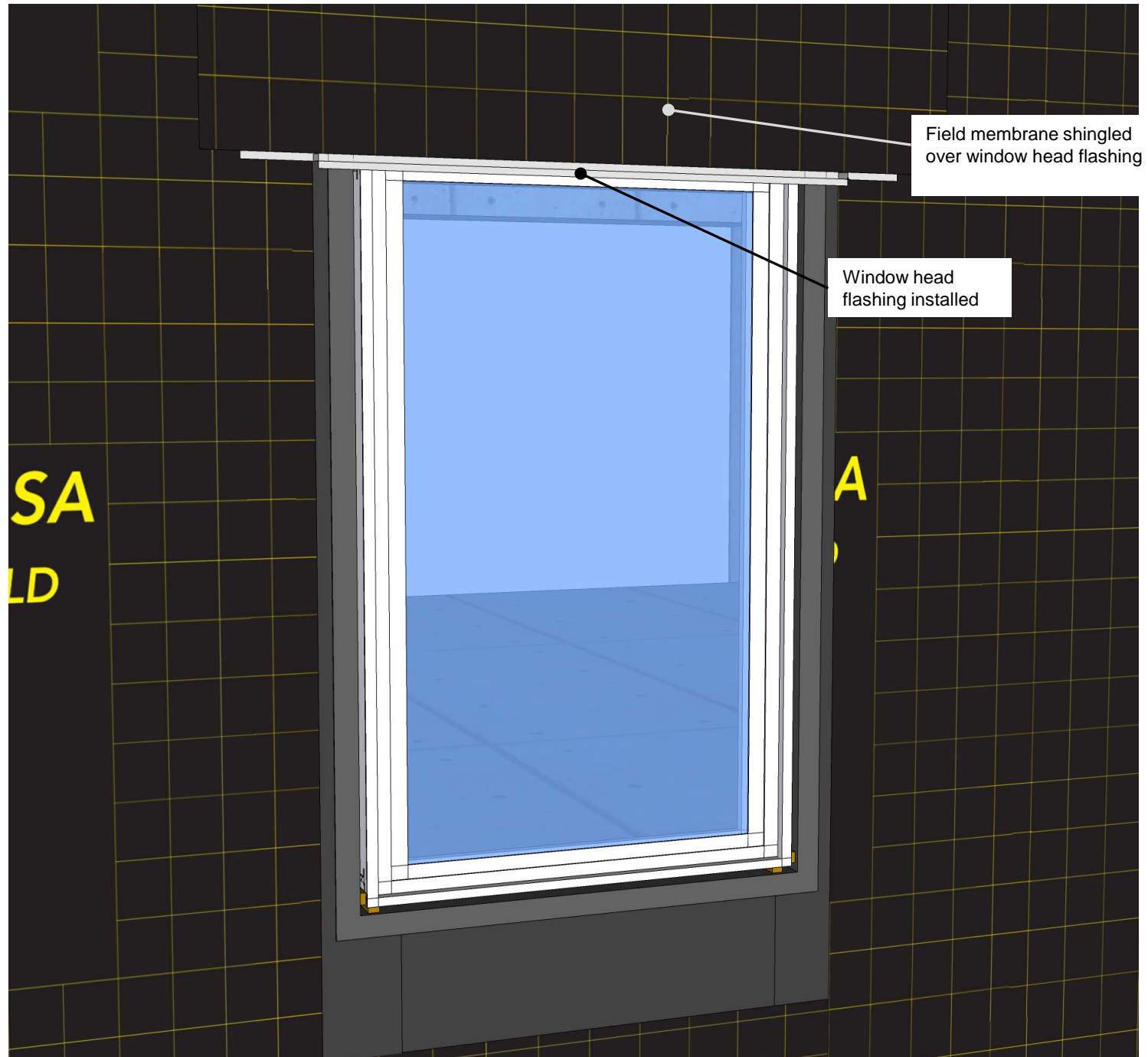
DISCLAIMER

Detail sketch is generic, representing suggested best practices for VaproShield materials, and does not represent a specific job site condition and therefore may not be applicable to certain projects. Detail sketch is designed for use as a reference and must be approved by the designer/ consultant of record for each project prior to installation by the subcontractor. Changes and approvals of VaproShield details are the sole responsibility of the designer/consultant of record. VaproShield is **not** the designer of record for building enclosure details and takes no responsibility for the accuracy or interpretation of actual project site conditions.

Always check www.VaproShield.com
for the latest details and installation
instructions

VaproShield LLC
915 26th Ave. N.W. Suite C5
Gig Harbor, WA 98335
Toll Free: 1.866.731.7663
www.VaproShield.com
© VaproShield 3/15/2016

Install head flashing and
shingle over with
detached field
membrane



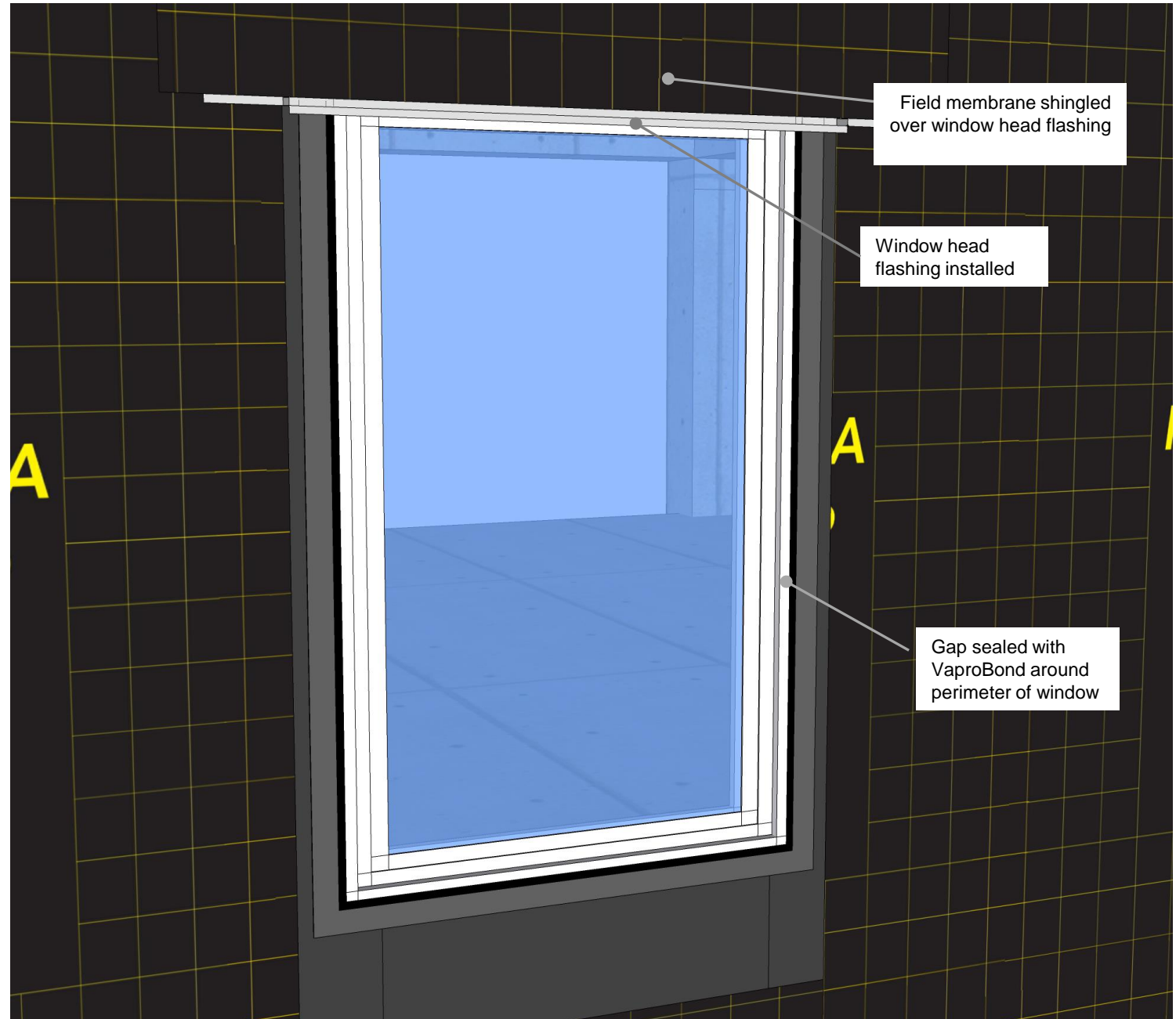
DISCLAIMER

Detail sketch is generic, representing suggested best practices for VaproShield materials, and does not represent a specific job site condition and therefore may not be applicable to certain projects. Detail sketch is designed for use as a reference and must be approved by the designer/ consultant of record for each project prior to installation by the subcontractor. Changes and approvals of VaproShield details are the sole responsibility of the designer/consultant of record. VaproShield is **not** the designer of record for building enclosure details and takes no responsibility for the accuracy or interpretation of actual project site conditions.

Always check www.VaproShield.com
for the latest details and installation
instructions

VaproShield LLC
915 26th Ave. N.W. Suite C5
Gig Harbor, WA 98335
Toll Free: 1.866.731.7663
www.VaproShield.com
© VaproShield 3/15/2016

Fill in gap around window with VaproBond sealant



DISCLAIMER

Detail sketch is generic, representing suggested best practices for VaproShield materials, and does not represent a specific job site condition and therefore may not be applicable to certain projects. Detail sketch is designed for use as a reference and must be approved by the designer/consultant of record for each project prior to installation by the subcontractor. Changes and approvals of VaproShield details are the sole responsibility of the designer/consultant of record. VaproShield is **not** the designer of record for building enclosure details and takes no responsibility for the accuracy or interpretation of actual project site conditions.

Always check www.VaproShield.com for the latest details and installation instructions